

## Box Pre-School Playgroup

Learning through creativity and play



# Newsletter – November 2025

## Welcome back!

We hope you had a relaxing half term. We start back with a supermarket and healthy eating topic. Children will explore how food gets from shop shelves to our lunchboxes and learn about making healthy choices. We have set up a role-play supermarket in and we will be practising early maths skills like counting, weighing, and handling money, as well as turn-taking and cooperation.

We'll also be focusing on healthy eating, especially around packed lunches. We'll talk about what makes a balanced lunch, explore food groups, and discuss how different foods help our bodies grow strong and healthy.



## Parent afternoon

We are offering the chance for parents to come in on the afternoon of **Wednesday 26<sup>th</sup> November (1-2:30pm)** for a ten minute slot with their child's key worker. You can bring children with you. Please let me know if you would like a slot.

## Box Primary School's Colour Run

Join us on **Sunday 16<sup>th</sup> November, 1-3pm**, on the lower field at Box Recreation ground when we will be face painting at Box Primary School's colour run and 5K.

FRIENDS OF BOX SCHOOL

# COLOUR RUN & 5K

TICKETS £7/KIDS/£12ADULT

SUNDAY, 16TH NOVEMBER  
1:00 P.M. – 3:00 P.M.  
LOWER FIELD  
BOX RECREATION GROUND

## Christmas Market

We are looking forward to Christmas and the festivities. We are organising the Santa Grotto at the Box Christmas Market (**Sunday 7<sup>th</sup> December**). It was a fantastic success last year and well worth bringing the children along to meet Santa. If you can help, please let me know.

# Box Pre-School Playgroup

Learning through creativity and play



## Easy Fundraising

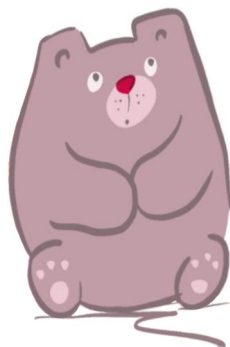
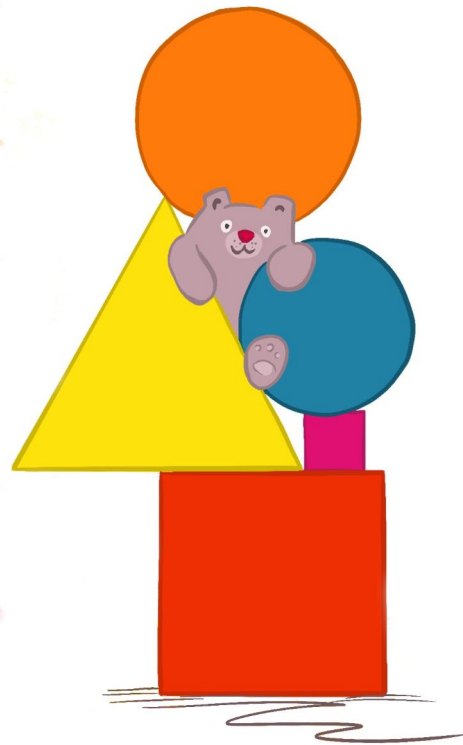
Did you know you can support us by raising money every time you shop online? And it doesn't cost a penny!

We are registered with **Easy Fundraising** where, through our charitable status, Box Pre-School receives donations from the day-to-day online purchases of our supporters.

With **Christmas** coming this is an easy way to raise funds – so far we have raised an amazing **£836.69** since registering!

This is such an effective fundraising opportunity, since it works with over 7,000 online retailers and it is really easy via a web browser extension, which automatically detects if the retailer is part of the scheme. Please continue to support this and encourage family and friends to join in too. Just scan the QR code shown here or use the link below:

<https://www.easyfundraising.org.uk/causes/box-pre-school-playgroup/>



# Box Pre-School Playgroup

Learning through creativity and play



## Safety

**Mobile Phones** – Due to Ofsted requirements, please don't use mobile phones on the premises or in the outside area.

**Toilets** – If you need to take your child to the toilet, please check with a member of staff first.

**Injuries** – Please let us know if your child has an injury so that we can complete a pre-existing injuries form.

**Covid-19 and other infectious diseases** – children should stay at home for three days if they test positive for Covid-19. If your child develops a high temperature they should stay at home until they are better. In cases of sickness and diarrhoea please return to playgroup 48 hours (minimum) after the last bout of sickness or diarrhoea.

**Absences** – Let us know by email or telephone if your child will be absent.

## Diary Dates

**Start of Term 2** – Monday 3<sup>rd</sup> November

**Sports Sessions** – Every Tuesday morning

**Box Primary School Colour Run & 5K** – Sunday 16<sup>th</sup> November 1-3pm (Box Rec)

**Parent afternoon** – Wednesday 26<sup>th</sup> November 1-2:30pm

**Box Christmas Market** – Sunday 7<sup>th</sup> December 1-4pm (Selwyn Hall)

**End of Term 2** – Friday 19<sup>th</sup> December

**Start of Term 3** – Monday 5<sup>th</sup> January

**End of Term 3** – Friday 13<sup>th</sup> February

## Staff

**Supervisor/Manager**–Yvonne Jenkinson

**Deputy Supervisor**–Sarah Vick

**Playgroup Assistants**–Isabel Lopez, Sarah-Jane Woods, Gemma Moore, Katie Smith, and Caroline Kirkwood

## Committee

**Chair**–Sally Weymouth

**Treasurer**–Emily Aspin

**Secretary**–Charlotte Mumme-Phippen

**Other committee members**– Jerry Watkins, Hannah Antrobus

**Ofsted representative**–Yvonne Jenkinson



## Contacting Us

During session time (8:30-15:00), please telephone us on **01225 743794** for anything urgent as we cannot regularly monitor email.

Outside session time, please email [boxpreschoolplaygroup@googlemail.com](mailto:boxpreschoolplaygroup@googlemail.com)